

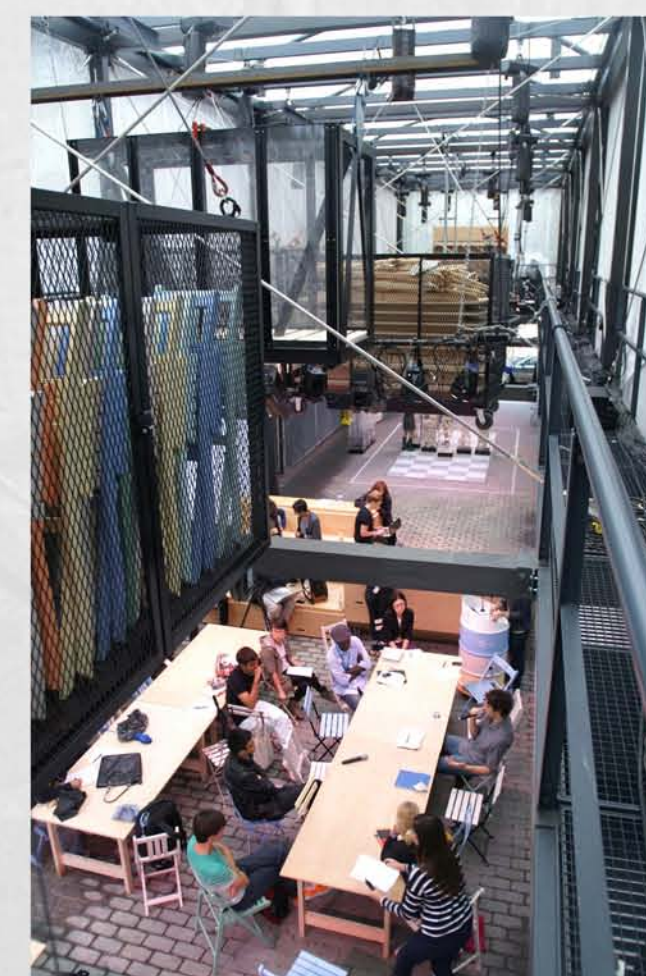
BMW GUGGENHEIM LAB

NEW YORK, NY

THE BMW GUGGENHEIM LAB IS A UNIQUE EXPERIMENT IN MUSEUM STEWARDSHIP, ARCHITECTURE, PUBLIC SPACE AND PUBLIC DISCOURSE. QUOTING THE PROJECT WEBSITE, "THE BMW GUGGENHEIM LAB IS A MOBILE LABORATORY TRAVELING TO NINE MAJOR CITIES WORLDWIDE OVER SIX YEARS. LED BY INTERNATIONAL INTERDISCIPLINARY TEAMS OF EMERGING TALENTS IN THE AREAS OF URBANISM, ARCHITECTURE, ART, DESIGN, SCIENCE, TECHNOLOGY, EDUCATION AND SUSTAINABILITY THE LAB ADDRESSES ISSUES OF CONTEMPORARY URBAN LIFE THROUGH PROGRAMS AND PUBLIC DISCOURSE. ITS GOAL IS THE EXPLORATION OF NEW IDEAS, EXPERIMENTATION, AND ULTIMATELY THE CREATION OF FORWARD-THINKING SOLUTIONS FOR CITY LIFE". THE SIX YEAR SPAN OF THE LAB PROGRAM INCLUDES THE DESIGN OF THREE SEPARATE LAB STRUCTURES, EACH INSTALLED FOR A TEN WEEK PERIOD IN THREE DIFFERENT CITIES OVER THE COURSE OF TWO YEARS.

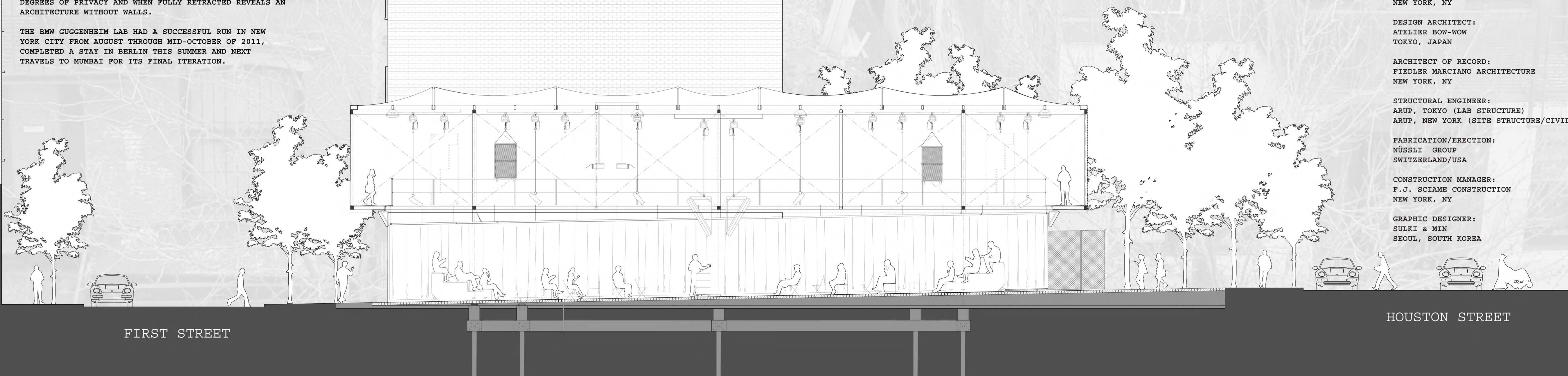
THE CURATORS OF THE LAB DIRECTED THE DESIGN TEAM FOR THIS INAUGURAL CYCLE TO PURSUE A NON-ICONIC ARCHITECTURE INTENDED TO FRAME THE PROGRAMS AND ACTIVITIES HELD WITHIN. MODERATE SEASONS CHOSEN FOR THE RUN OF THE LAB ENCOURAGED AN OPEN AIR SOLUTION THAT WOULD PIQUE PUBLIC CURIOSITY AND INTERACTION. THE LOGISTICS OF ASSEMBLY, DISASSEMBLY, CRATING AND SHIPPING PLAYED AN INTEGRAL ROLE IN INFORMING THE ARCHITECTURAL SOLUTION.

THE SITE CHOSEN BY THE DESIGN TEAM FOR THE LAB'S NEW YORK CITY DEBUT IS LOCATED IN FIRST PARK, AN ATTENUATED NEIGHBORHOOD GARDEN STRETCHING EAST/WEST ALONG THE NORTHERN EDGE OF HOUSTON STREET AT SECOND AVENUE. THE GARDEN AREA IS CONNECTED TO FIRST STREET VIA A 25' X 100' ABANDONED LOT; RUBBLE STREWN, RAT INFESTED AND FENCED OFF FOLLOWING YEARS OF NEGLECT. THE BUILDABLE SITE FOOTPRINT WAS APPROXIMATELY ONE-THIRD OF THE REQUIRED PROGRAM AREAS, WHICH INCLUDED EXHIBITION SPACE, WORKSHOPS, A LECTURE HALL, CAFE AND STORAGE. VERTICAL CIRCULATION REQUIRED BY A MULTI-LEVEL SOLUTION WOULD CONSUME VALUABLE SITE AREA AND RUN COUNTER TO THE PROJECT'S TEMPORARY NATURE. THE DESIGN PROPOSAL CONCEIVED THE LAB AS AN URBAN 'PERFORMANCE' WITH A TEN WEEK RUN. THIS THEATRICAL FLY SPACE PLACED AMID THE URBAN FABRIC TRANSFORMS THE STAGE BELOW INTO A NEW TYPE OF PUBLIC LOGGIA. MONITORS, LIGHTS, GRANDSTANDS, FURNITURE AND EQUIPMENT SUSPENDED OVERHEAD ALLOW FOR QUICK SCENE CHANGES RESPONDING TO THE VARIED PROGRAM REQUIREMENTS ON ANY GIVEN DAY. SPACE AND TIME ARE LINKED IN THIS TRANSFORMATIONAL PROCESS, LENDING THE PROJECT A SENSE OF SPECTACLE AND PERFORMANCE THAT SERVES AS A DYNAMIC CATALYST FOR PUBLIC INTEREST. CAFE AND TOILET FACILITIES RESIDE ALONG THE GARDEN PATH AND CREATE A THREE PART COMPOSITION THAT ENGAGES THE ENTIRE PARK.



THE SUPER LIGHTWEIGHT STRUCTURAL FRAME HOVERING OVERHEAD EMPLOYS INNOVATIVE CARBON FIBER BEAMS AND COLUMNS ONE SIXTH THE WEIGHT OF SIMILAR STEEL MEMBERS. THIS ALLOWS THE LAB TO BE EASILY HANDLED, ERECTED, DISASSEMBLED AND TRANSPORTED. DIFFUSED DAYLIGHT FILTERS THROUGH THE POLYESTER ROOF MEMBRANE AND THE UPPER FLY SPACE, WRAPPED IN A DOUBLE LAYER OF WHITE AND BLACK POLYESTER MESH THAT CREATES A MOIRÉ PATTERN. THE FLY SPACE SITS DELICATELY BETWEEN THE NEIGHBORING MASONRY BUILDINGS ON SIX THIN COLUMNS. A PERIMETER CURTAIN AT GROUND LEVEL PROVIDES VARYING DEGREES OF PRIVACY AND WHEN FULLY RETRACTED REVEALS AN ARCHITECTURE WITHOUT WALLS.

THE BMW GUGGENHEIM LAB HAD A SUCCESSFUL RUN IN NEW YORK CITY FROM AUGUST THROUGH MID-OCTOBER OF 2011, COMPLETED A STAY IN BERLIN THIS SUMMER AND NEXT TRAVELS TO MUMBAI FOR ITS FINAL ITERATION.



CLIENT:
SOLOMON R. GUGGENHEIM MUSEUM
NEW YORK, NY

DESIGN ARCHITECT:
ATELIER BOW-WOW
TOKYO, JAPAN

ARCHITECT OF RECORD:
FIEDLER MARCIANO ARCHITECTURE
NEW YORK, NY

STRUCTURAL ENGINEER:
ARUP, TOKYO (LAB STRUCTURE)
ARUP, NEW YORK (SITE STRUCTURE/CIVIL)

FABRICATION/ERECTION:
NÜSSLI GROUP
SWITZERLAND/USA

CONSTRUCTION MANAGER:
F.J. SCIAME CONSTRUCTION
NEW YORK, NY

GRAPHIC DESIGNER:
SULKI & MIN
SEOUL, SOUTH KOREA

FIRST STREET

HOUSTON STREET